

MONTHLY MEMBERSHIP PROGRESS REPORT

District 29 C

Results as of: 6/30/2025

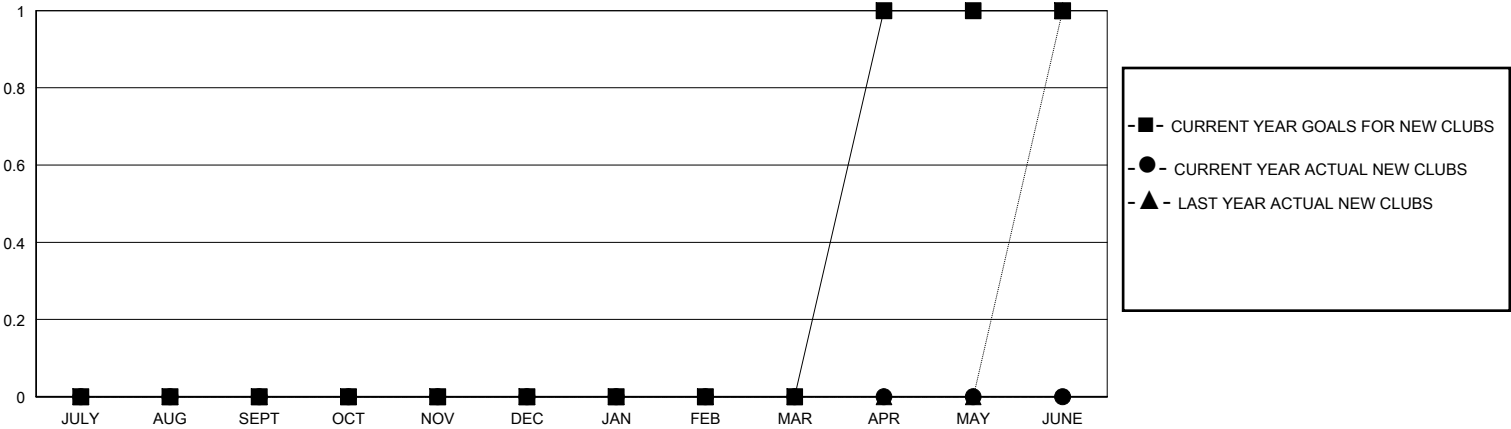
GMT:

LOCATION WEST VIRGINIA

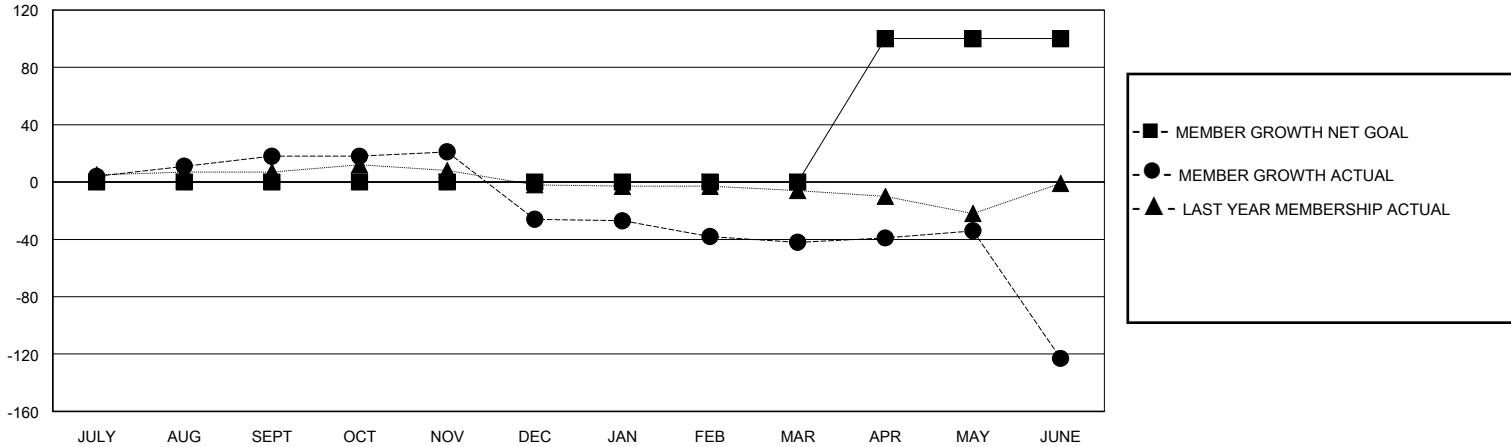
GMT CA

| Clubs | | | | Members | | | |
|-----------------------|---------------|-----------|---------------|-----------------------|------------------------|----------------------|--|
| RESULTS FOR 2024-2025 | | | | RESULTS FOR 2024-2025 | | | |
| QUARTER | NEW CLUB GOAL | NEW CLUBS | DROPPED CLUBS | QUARTER | MEMBER GROWTH NET GOAL | MEMBER GROWTH ACTUAL | DROPPED MEMBERS ACTUAL (including transfers) |
| JULY/AUG/SEPT | 0 | 0 | 0 | JULY/AUG/SEPT | 0 | 24 | 6 |
| OCT/NOV/DEC | 0 | 0 | 3 | OCT/NOV/DEC | 0 | 16 | 58 |
| JAN/FEB/MAR | 0 | 0 | 0 | JAN/FEB/MAR | 0 | 6 | 22 |
| APR/MAY/JUNE | 1 | 0 | 4 | APR/MAY/JUNE | 100 | 22 | 101 |

GOALS AND ACTUAL NEW CLUBS CUMULATIVE



GOALS AND ACTUAL MEMBERS CUMULATIVE



| | | |
|--|---|--|
| DROPPED CLUBS: 7 | 26 CLUBS OF 48 ADDED 1 OR MORE NEW MEMBERS | <u>GENDER DISTRIBUTION</u> MALE 466 (59.97%) FEMALE 308 (39.64%) |
| <u>DROPPED MEMBERS</u> DECEASED 17 CLUB CANCELLED 104 OTHER 66 TOTAL 187 | CLICK HERE FOR CUMULATIVE MEMBERSHIP DATA | TOTAL FAMILY UNIT MEMBERS 224 FAMILY MEMBERS PAYING HALF DUES 114 |